

SPECIFICATIONS	Model	150B47.5H	
		B-series 7.5kW, 3-phase	

**Type of Pump**

Submersible cast iron pump suitable for pumping sewage, wastewater, storm water, etc.

**Type of Fluid**

Sewage, wastewater, and water carrying solid matters

Temperature: 0 to 40°C

(High temperature model available on special request)

**Discharge Bore**

150mm

**Motor Output**

7.5kW

**Power Supply**

Three-phase

**Starting Method**

Direct on Line (Star-Delta available on special request)

**Motor**

Continuous-duty rated, dry-type induction motor

Insulation Class: F

Degree of Protection: IP68

No. of Poles & Speed (Synchronous Speed)

4-pole, 1500/1800min<sup>-1</sup> (50/60Hz)

Power Supply Voltages & Rated Currents

50Hz	60Hz
380V – 16.3A	220V – 27.6A
400V – 15.9A	380V – 15.6A
415V – 15.7A	440V – 13.7A

**Power Cable**

Sheath: Chloroprene rubber

Standard Length: 8m

200 to 600V supply:

1 × 4 × 5.5mm<sup>2</sup>, O.D. 16.8mm

**Dry Weight (excluding cable)**

Free Standing Type: 210kg

Guide Rail Fitting Type: 180kg

**Impeller**

Shrouded single-channel impeller for solid-handling design dynamically balanced

Solids Passage

50Hz – φ75mm

60Hz – φ70mm

**Cable Entry with Anti-Wicking Block**

Watertight cable entry with strain-relief device. The anti-wicking block prevents water incursion due to capillary action should the power cable be damaged or the end submerged.

**Bearings**

Permanently lubricated, deep-groove, double-shielded C3 ball bearings

**Shaft**

420 stainless steel

**Shaft Seal (Mechanical Seal)**

Furnished with a double-face mechanical seal located in oil chamber. Both upper and lower seal faces always run in a clean environment.

Upper Seal Faces: SiC + SiC

Lower Seal Faces: SiC + SiC

**Oil Seal (Lip Seal)**

Used as a "Dust Seal", it protects the mechanical seal from abrasive particles.

**OIL LIFTER (Patented)**

Equipped in oil chamber. It forcibly supplies lubricating oil to the mechanical seal and continues to supply the oil to the upper seal faces even if lubricant falls below the rated volume.

Type of Lubricating Oil & Volume

Turbine Oil (ISO VG32), 3500ml

**Motor Protection Device**

A circle thermal protector built in the motor housing. Directly cuts the motor circuit if excessive heat builds up or an overcurrent condition occurs in the motor.

**Optional Accessories**
**Bend Set (Free Standing Type)**

- Discharge Bend
- JIS 10kg/cm<sup>2</sup> Screwed Flange

**Stand Set (Free Standing Type)**

- Stand

**TOS Set (Guide Rail Fitting Type)**

- Duckfoot Bend
- Guide Support
- Guide Hook
- Lifting Chain 5m (with Shackles)
- JIS 10kg/cm<sup>2</sup> Screwed Flange

**External Leakage Sensor**

NO. A-13995-1

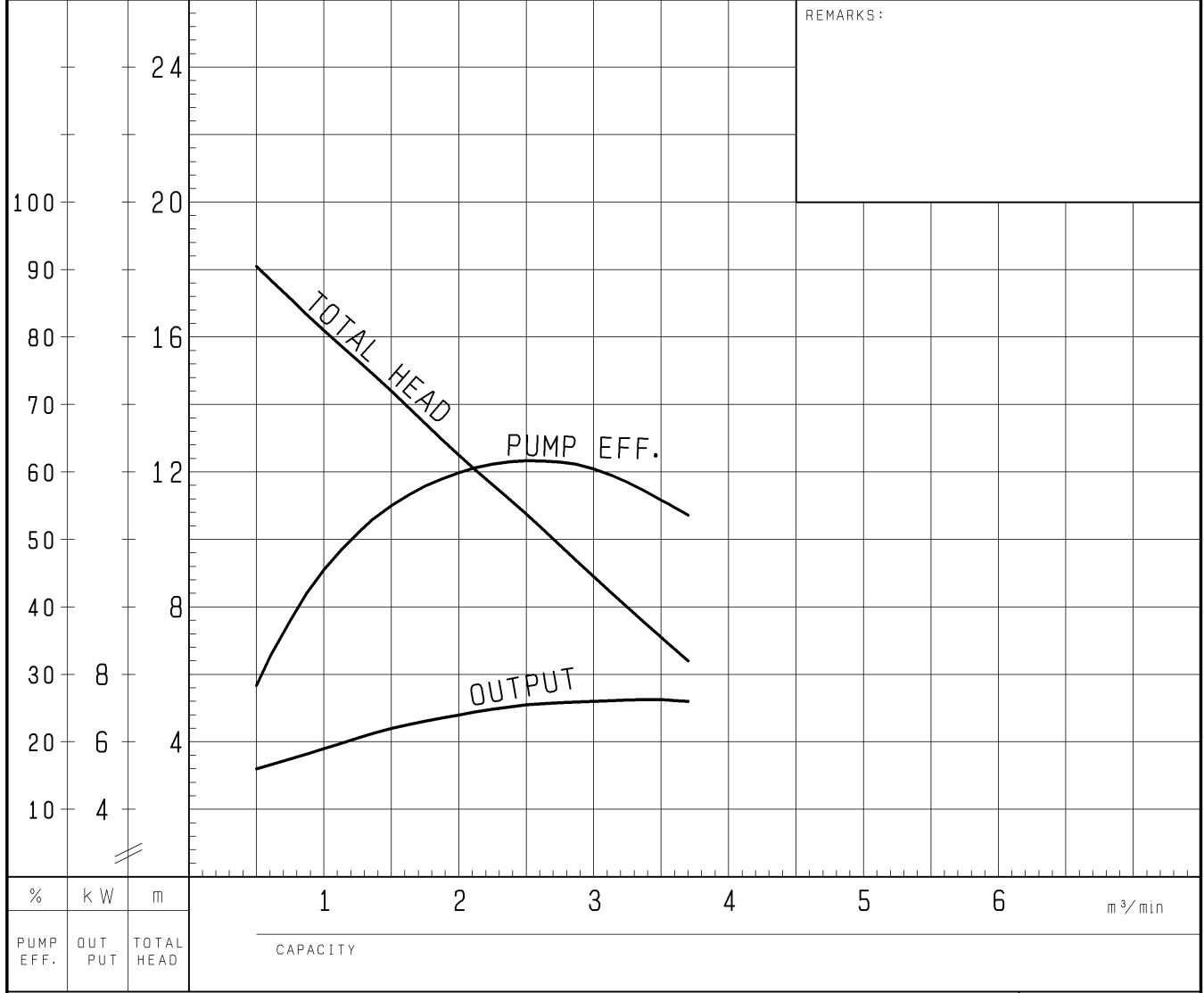
# PUMP PERFORMANCE CURVES

TYPE Sewage Submersible Channel Impeller Pump	MODEL 150B47.5H -53 TOS150B47.5H -53	FREQUENCY 50 Hz
--	---	-----------------

CUSTOMER'S NAME \_\_\_\_\_

EQUIPMENT TITLE \_\_\_\_\_ NO. \_\_\_\_\_

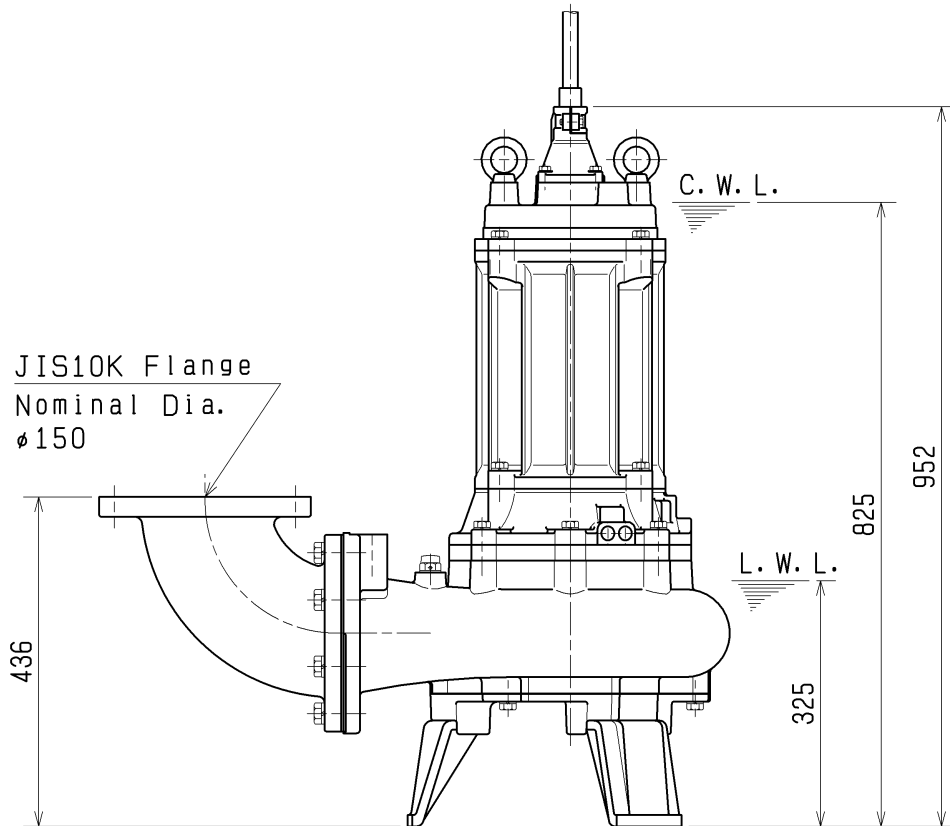
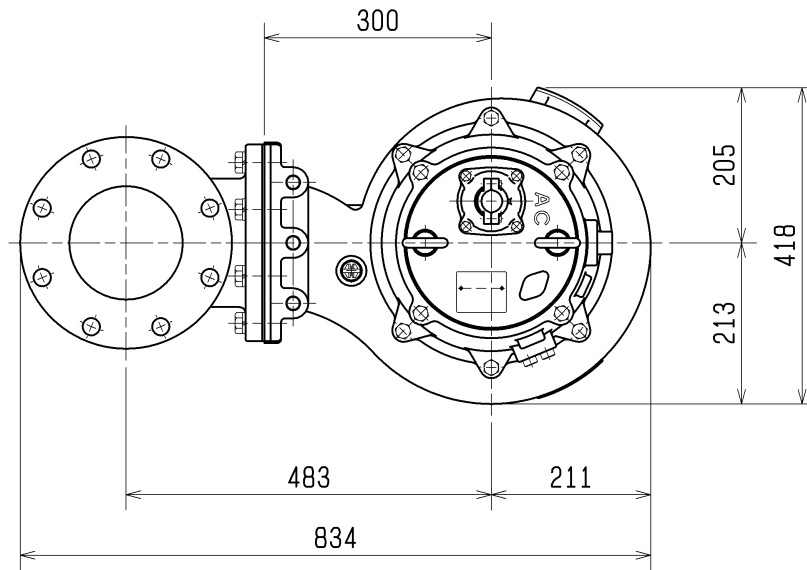
	STANDARD SPECIFICATIONS	REQUIRED SPECIFICATIONS
DISCHARGE BORE	150 mm	mm
TOTAL HEAD	10 m	m
CAPACITY	2.7 m <sup>3</sup> /min	m <sup>3</sup> /min
MOTOR OUTPUT	7.5 kW	kW
PHASE x VOLTAGE	3 $\phi$ x V	$\phi$ x V
CURRENT	A	A
POLES / REVOLUTION	4 P / s. s. 1500 min <sup>-1</sup>	P / min <sup>-1</sup>
STARTING METHOD	DIRECT ON LINE	
INSULATION CLASS	F	



TSURUMI MFG. CO., LTD.

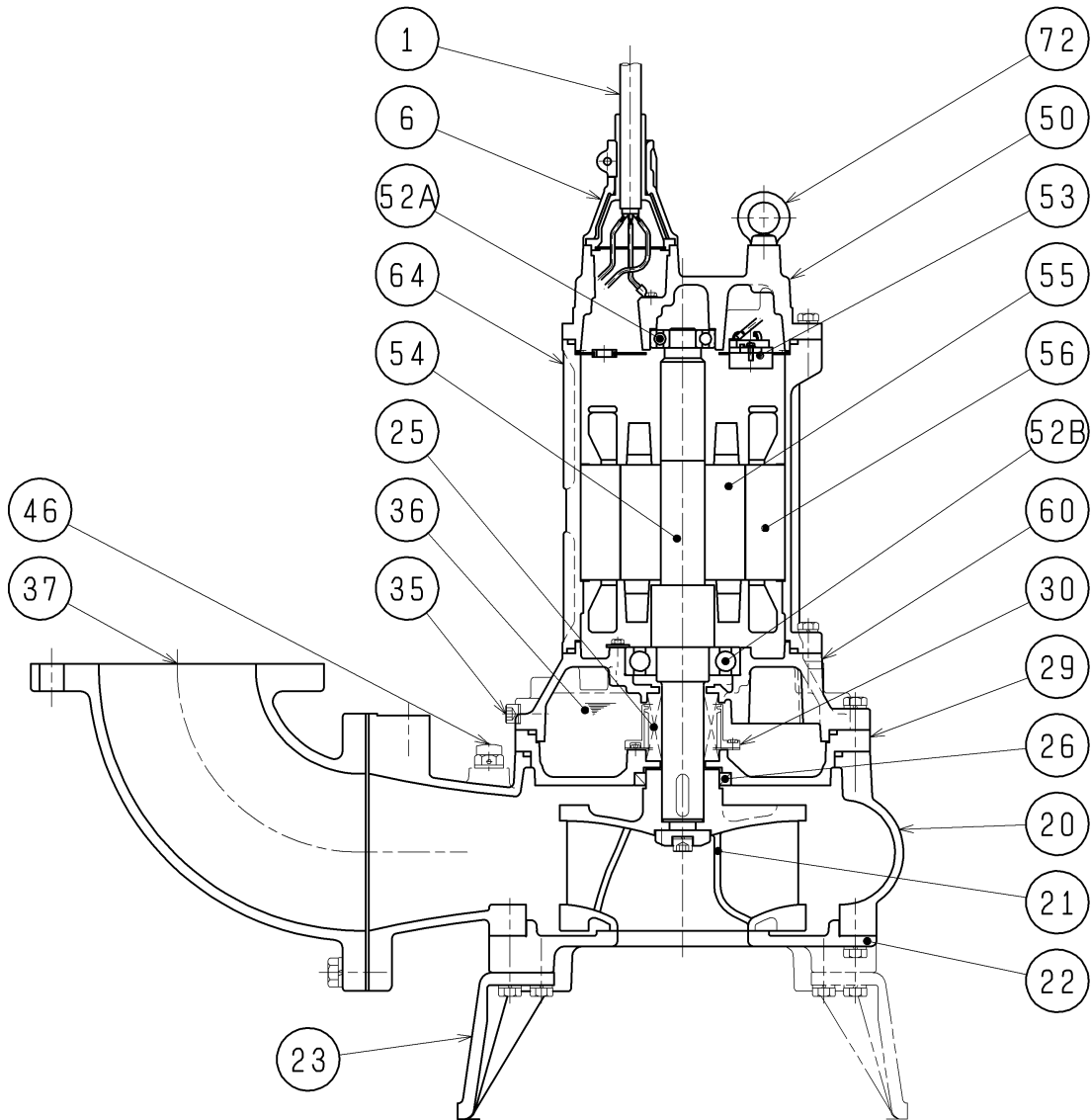
DIMENSION DRAWING		No.	No. A-14009-1
TYPE	Sewage Submersible Channel Impeller Pump	MODEL	150B47.5H -53/63

Approximate  
Weight(\*)  
210kg  
\*excluding cable



C.W.L. :Continuous Running Water Level  
L.W.L. :Lowest Running Water Level

<b>SECTIONAL DRAWING</b>		No.	No. A-14016-1
TYPE	Sewage Submersible Channel Impeller Pump	MODEL	150B47.5H -53/63



REQ. SPECIFICATION

No.	DESCRIPTION	Q'TY	MATERIAL / NOTE	No.	DESCRIPTION	Q'TY	MATERIAL / NOTE
1	Cable	1	Chloroprene Sheath	46	Air Release Valve	1	Nylon
6	Stuffing Box	1	Gray Iron Casting	50	Motor Bracket	1	Gray Iron Casting
20	Pump Casing	1	Gray Iron Casting	52A	Upper Bearing	1	6306ZZC3
21	Impeller	1	Gray Iron Casting	52B	Lower Bearing	1	6310ZZC3
22	Suction Cover	1	Gray Iron Casting	53	Motor Protector	1	
23	Stand	3	Gray Iron Casting	54	Shaft	1	Stainless Steel 420J2
25	Mechanical Seal	1	H-40	55	Rotor	1	
26	Oil Seal	1	TC709212	56	Stator	1	
29	Oil Casing	1	Gray Iron Casting	60	Bearing Housing	1	Gray Iron Casting
30	Oil Lifter	1	Plastic	64	Motor Frame	1	Gray Iron Casting
35	Oil Plug	2	Stainless Steel 304	72	Eye Bolt	2	Structure Steel
36	Lubricant		Turbine Oil (ISO VG32)				
37	Discharge Bend	1	Gray Iron Casting				