

SPECIFICATIONS	Model	LH33.0	
		LH-series	
		3kW, 3-phase	

**Type of Pump**

Submersible high head drainage pump for construction and foundation works, floodwater drainage, etc.

**Type of Fluid**

Stormwater, groundwater, wash water, and sand-carrying water

Temperature: 0 to 40°C

**Discharge Bore & Connection**

80mm, Threaded Hose Connector

**Motor Output**

3kW

**Power Supply**

Three-phase

**Starting Method**

Direct on Line

**Motor**

Continuous-duty rated, dry-type induction motor

Insulation Class: F

Degree of Protection: IP68

No. of Poles & Speed (Synchronous Speed)

2-pole, 3000/3600min<sup>-1</sup> (50/60Hz)

Power Supply Voltages & Rated Currents

50Hz	60Hz
380V – 6.6A	220V – 11.5A
400V – 6.5A	380V – 6.7A
415V – 6.5A	440V – 6.0A

**Power Cable**

Sheath: Chloroprene rubber

Standard Length: 20m

200 to 600V supply:

1 x 4 x 2.0mm<sup>2</sup>, O.D. 14.4mm

**Dry Weight (excluding cable)**

42kg

**Impeller**

Semi-open impeller of high-chromium cast iron

Solids Passage

50Hz –  $\phi$ 6mm

60Hz –  $\phi$ 6mm

**Cable Entry with Anti-Wicking Block**

Watertight cable entry with strain-relief device. The anti-wicking block prevents water incursion due to capillary action should the power cable be damaged or the end submerged.

**Bearing**

Permanently lubricated, deep-groove, double-shielded C3 ball bearings

**Shaft**

420 stainless steel

**Shaft Seal (Mechanical Seal)**

Furnished with a double-face mechanical seal located in oil chamber. Both upper and lower seal faces always run in a clean environment.

Upper Seal Face: SiC + SiC

Lower Seal Face: SiC + SiC

**OIL LIFTER (Patented)**

Equipped in oil chamber. It forcibly supplies lubricating oil to the mechanical seal and continues to supply the oil to the upper seal faces even if lubricant falls below the rated volume.

Type of Lubricating Oil & Volume

Turbine Oil (ISO VG32), 380ml

**Motor Protection Device**

A circle thermal protector built in the motor housing. Directly cuts the motor circuit if excessive heat builds up or an overcurrent condition occurs in the motor.

NO. A-12287-1

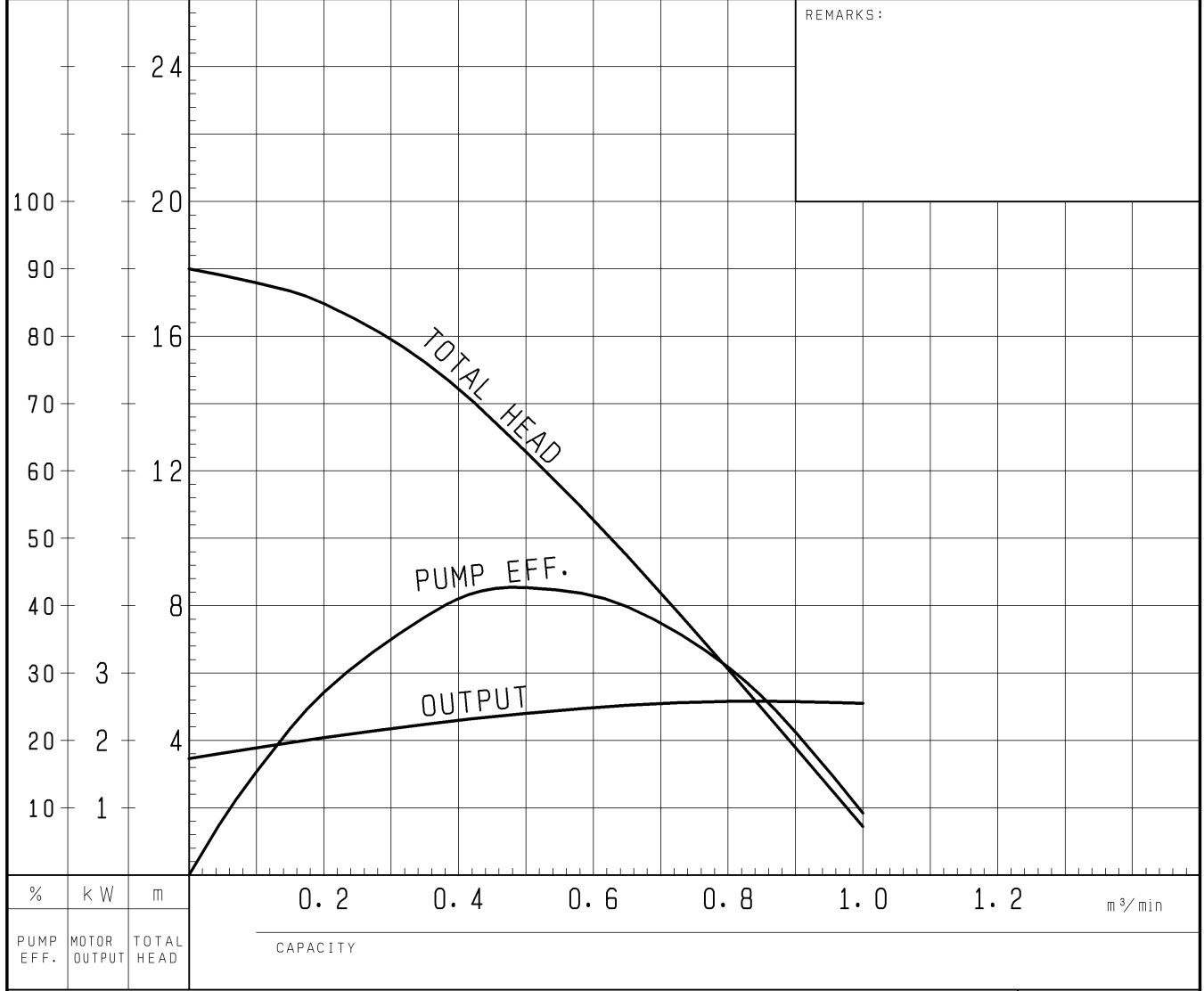
# PUMP PERFORMANCE CURVES

TYPE SUBMERSIBLE GENERAL DEWATERING PUMP (HIGH HEAD)	MODEL LH33.0 -50	FREQUENCY 50 Hz
--	---------------------	--------------------

CUSTOMER'S NAME \_\_\_\_\_

EQUIPMENT TITLE \_\_\_\_\_ NO. \_\_\_\_\_

	STANDARD SPECIFICATIONS	REQUIRED SPECIFICATIONS
DISCHARGE BORE	80 mm	mm
TOTAL HEAD	12 m	m
CAPACITY	0.5 m <sup>3</sup> /min	m <sup>3</sup> /min
MOTOR OUTPUT	3 kW	kW
PHASE x VOLTAGE	3 $\phi$ x V	$\phi$ x V
CURRENT	A	A
POLES / REVOLUTION	2 P / S. S. 3000 min <sup>-1</sup>	P / min <sup>-1</sup>
STARTING METHOD	DIRECT ON LINE	
INSULATION CLASS	F	

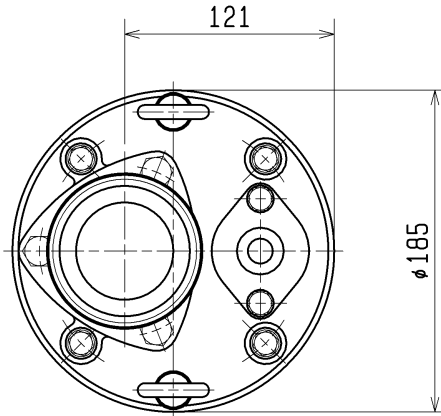


TSURUMI MFG. CO., LTD.

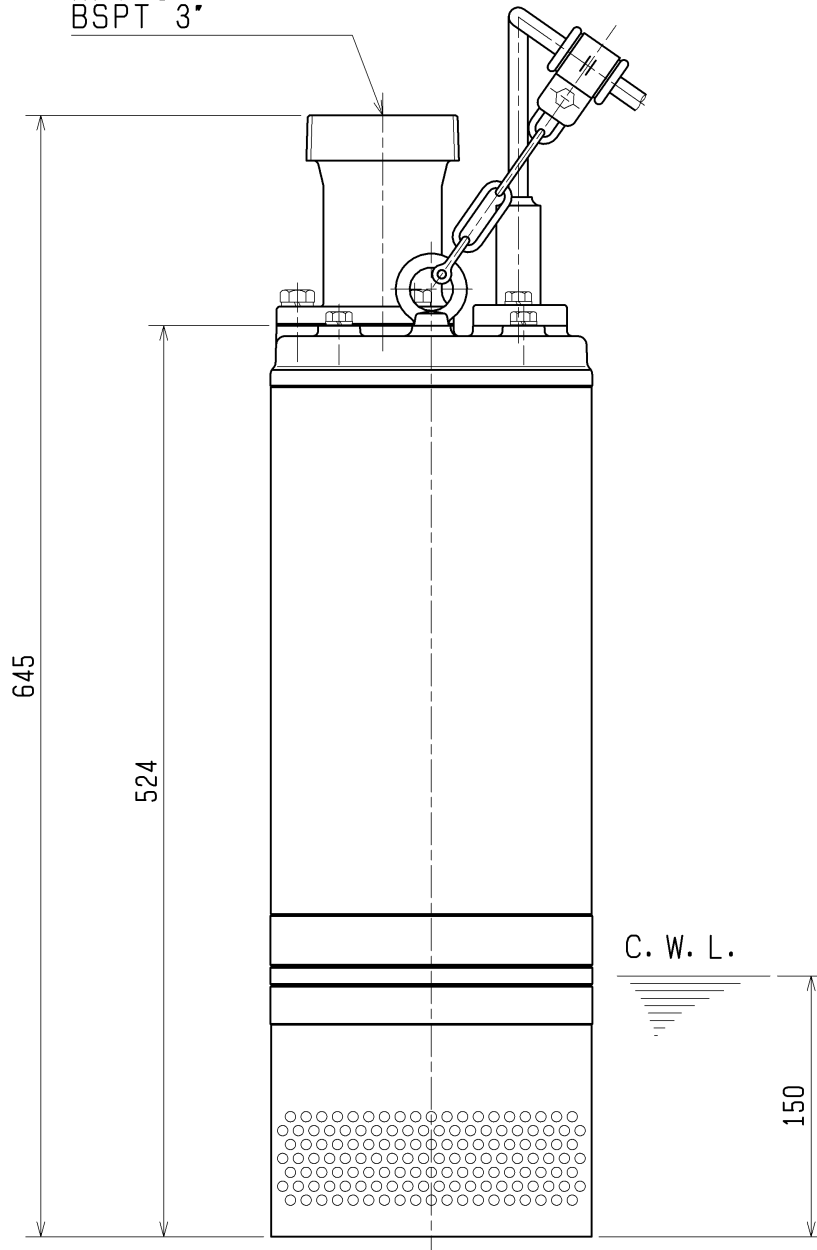
<b>DIMENSION DRAWING</b>		No.	No. A-12291-1
TYPE	SUBMERSIBLE GENERAL DEWATERING PUMP (HIGH HEAD)	MODEL	LH33.0 -50/60

Approximate Weight (※)
42kg

※excluding cable

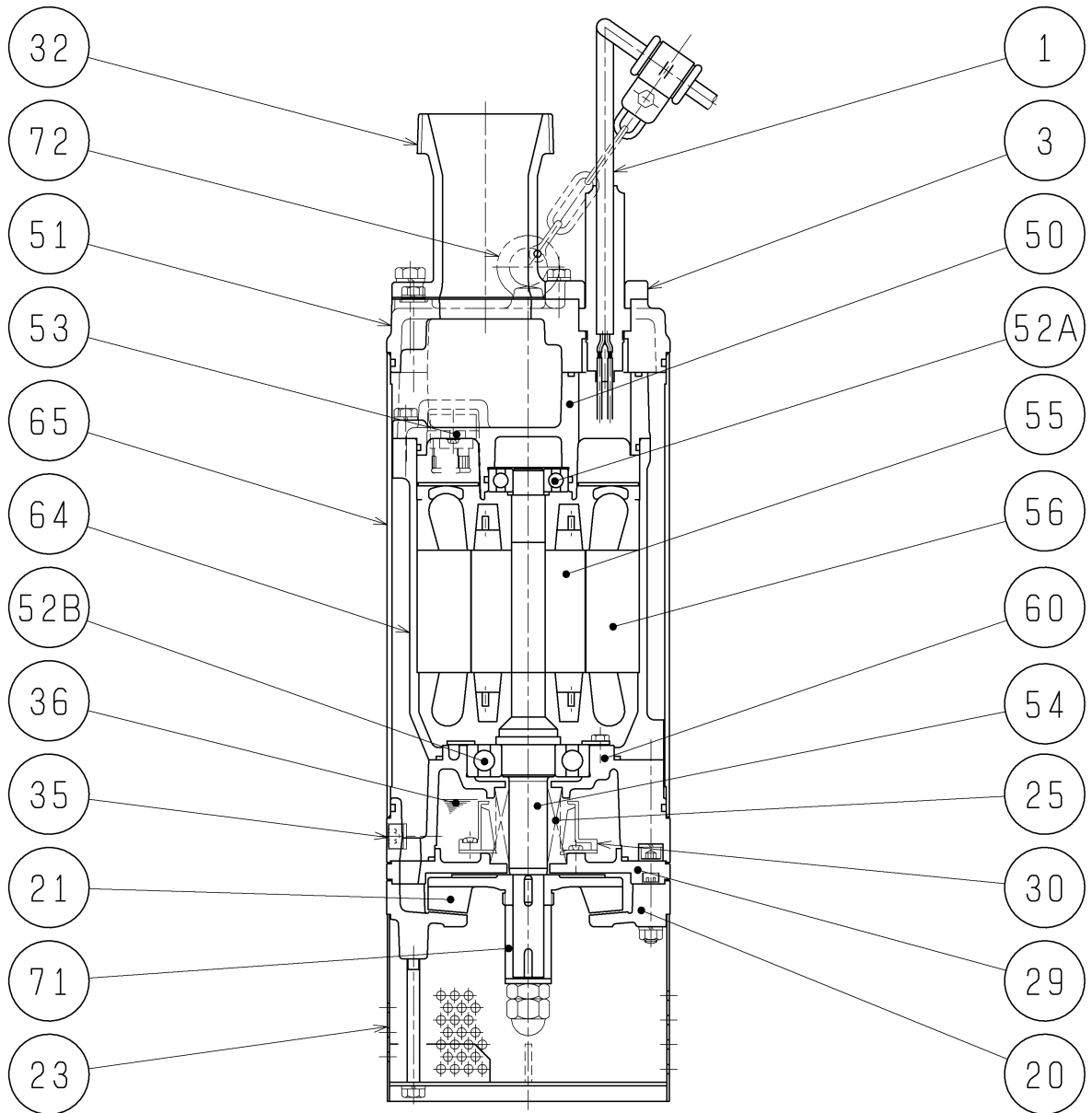


Nominal Dia.  
NPT 3" or  
BSPT 3"



C. W. L. :Continuous Running Water Level

SECTIONAL DRAWING		No.	No.	A-12295-2
TYPE	SUBMERSIBLE GENERAL DEWATERING PUMP (HIGH HEAD)	MODEL	LH33.0 -50/60	



REQ. SPECIFICATION	

※ the wetted part

No.	DESCRIPTION	Q'TY	MATERIAL / NOTE	No.	DESCRIPTION	Q'TY	MATERIAL / NOTE
1	Cabtyre Cable	1	Chloroprene Sheath	52A	Upper Bearing	1	6304ZCC3
3	Gland	1	Gray Iron Casting	52B	Lower Bearing	1	6307ZCC3
20	Pump Casing	1	Ductile Iron Casting	53	Motor Protector	1	
21	Impeller	1	Chromium Iron Casting	54	Shaft	1	Stainless Steel 420J2(※)
23	Strainer Stand	1	Steel Plate	55	Rotor	1	
25	Mechanical Seal	1	H-25T	56	Stator	1	
29	Oil Casing	1	Ductile Iron Casting	60	Bearing Housing	1	Gray Iron Casting
30	Oil Lifter	1	Plastic	64	Motor Frame	1	Gray Iron Casting
32	Hose Coupling	1	Ductile Iron Casting	65	Outer Cover	1	Steel Plate
35	Oil Plug	1	Stainless Steel 304	71	Shaft Sleeve	1	Stainless Steel 403
36	Lubricant		Turbine Oil (ISO VG32)	72	Eye Bolt	2	Stainless Steel 304
50	Motor Bracket	1	Gray Iron Casting				
51	Head Cover	1	Gray Iron Casting				