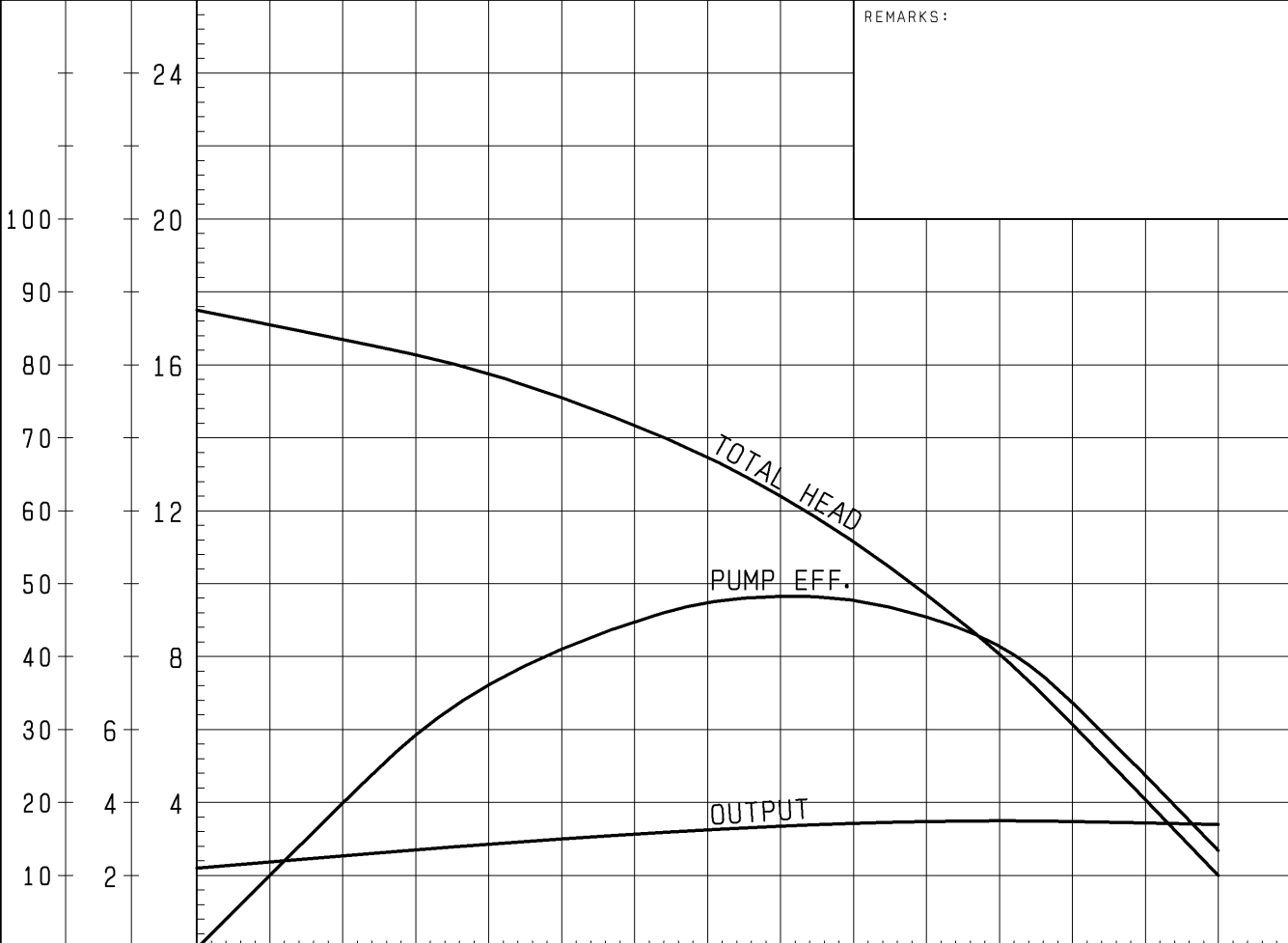


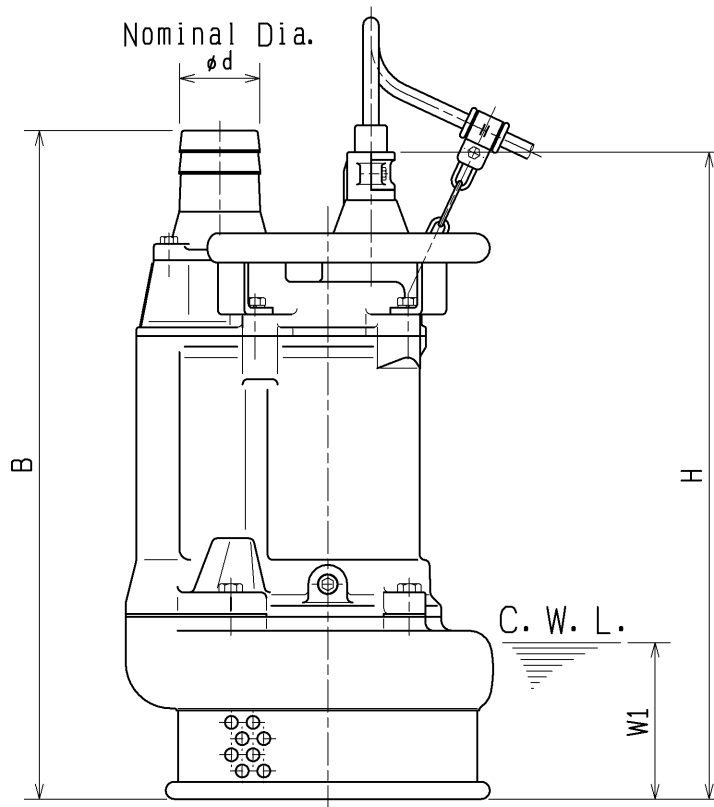
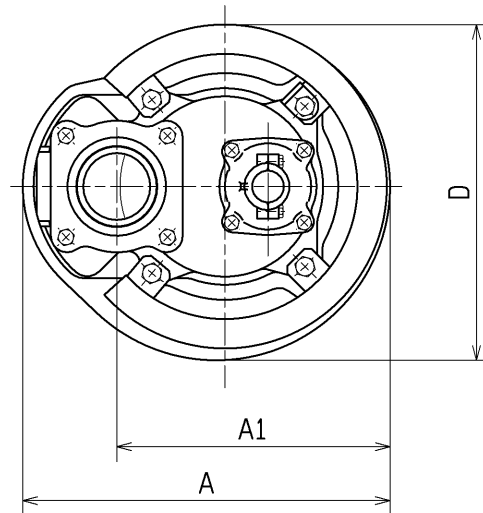
SPECIFICATIONS	Model	KRS2-D3/B3	KRS-series
			3.7kW, 3-phase
<b>Type of Pump</b> Submersible high volume drainage pump for construction and foundation works, floodwater drainage, etc.		<b>Impeller</b> Semi-open Impeller made of ductile cast iron	
<b>Type of Fluid</b> Stormwater, groundwater, wash water, and sand-carrying water		Solids Passage 50Hz – ϕ12mm 60Hz – ϕ12mm	
Temperature: 0 to 40°C (High temperature model available on special request)		<b>Cable Entry with Anti-Wicking Block</b> Watertight cable entry with strain-relief device. The anti-wicking block prevents water incursion due to capillary action should the power cable be damaged or the end submerged.	
<b>Discharge Bore &amp; Connection</b> 80mm, Hose Coupling		<b>Bearing</b> Permanently lubricated, deep-groove, double-shielded C3 ball bearings	
<b>Motor Output</b> 3.7kW		<b>Shaft</b> 420 stainless steel	
<b>Power Supply</b> Three-phase		<b>Shaft Seal (Mechanical Seal)</b> Furnished with a double-face mechanical seal located in oil chamber. Both upper and lower seal faces always run in a clean environment.	
<b>Starting Method</b> Direct on Line (Star-Delta available on special request)		Upper Seal Face: SiC + SiC Lower Seal Face: SiC + SiC	
<b>Motor</b> Continuous-duty rated, dry-type induction motor		<b>Oil Seal (Lip Seal)</b> Used as a “Dust Seal”, it protects the mechanical seal from abrasive particles.	
Insulation Class: E Degree of Protection: IP68		<b>OIL LIFTER (Patented)</b> Equipped in oil chamber. It forcibly supplies lubricating oil to the mechanical seal and continues to supply the oil to the upper seal faces even if lubricant falls below the rated volume.	
No. of Poles & Speed (Synchronous Speed) 4-pole, 1500/1800min <sup>-1</sup> (50/60Hz)		Type of Lubricating Oil & Volume Turbine Oil (ISO VG32), 1850ml	
Power Supply Voltages & Rated Currents 50Hz                      60Hz 380V – 8.3A              220V – 14.4A 400V – 8.0A              380V – 8.3A 415V – 7.8A              440V – 7.2A		<b>Motor Protection Device</b> A circle thermal protector built in the motor housing. Directly cuts the motor circuit if excessive heat builds up or an overcurrent condition occurs in the motor.	
<b>Power Cable</b> Sheath: Chloroprene rubber Standard Length: 8m 200 to 600V supply: 1 x 4 x 2.0mm <sup>2</sup> , O.D. 14.4mm			
<b>Dry Weight</b> (excluding cable) 91kg			
TSURUMI MANUFACTURING CO., LTD.			

				NO.	A-22163-1																																				
PUMP PERFORMANCE CURVES																																									
TYPE		Submersible Dewatering Pump		MODEL	KRS2-D3																																				
				FREQUENCY	50 Hz																																				
CUSTOMER'S NAME																																									
EQUIPMENT TITLE																																									
NO.																																									
		STANDARD SPECIFICATIONS		REQUIRED SPECIFICATIONS																																					
DISCHARGE BORE		80 mm		mm																																					
TOTAL HEAD		15 m		m																																					
CAPACITY		0.5 m <sup>3</sup> /min		m <sup>3</sup> /min																																					
MOTOR OUTPUT		3.7 kW		kW																																					
PHASE × VOLTAGE		3 φ × V		φ × V																																					
CURRENT		A		A																																					
POLES / REVOLUTION		4 P / S. S. 1500 min <sup>-1</sup>		P / min <sup>-1</sup>																																					
STARTING METHOD		DIRECT ON LINE																																							
INSULATION CLASS		E																																							
				REMARKS:																																					
 <p>The graph displays three performance curves for the KRS2-D3 pump. The x-axis represents Capacity in m<sup>3</sup>/min, ranging from 0 to 1.4. The left y-axis has two scales: one for Total Head in meters (m) ranging from 10 to 24, and another for Pump Efficiency (%) ranging from 10 to 100. The right y-axis represents Output in kW, ranging from 10 to 100. The 'TOTAL HEAD' curve starts at approximately 18.5 m at 0 capacity and decreases to about 11 m at 1.4 m<sup>3</sup>/min. The 'PUMP EFF.' curve starts at 0% at 0 capacity, peaks at approximately 48% efficiency at 0.8 m<sup>3</sup>/min, and then declines. The 'OUTPUT' curve starts at approximately 11 kW at 0 capacity and increases to about 17 kW at 1.4 m<sup>3</sup>/min.</p> <table border="1"><thead><tr><th>CAPACITY (m<sup>3</sup>/min)</th><th>TOTAL HEAD (m)</th><th>PUMP EFF. (%)</th><th>OUTPUT (kW)</th></tr></thead><tbody><tr><td>0.0</td><td>18.5</td><td>0</td><td>11</td></tr><tr><td>0.2</td><td>17.5</td><td>25</td><td>12</td></tr><tr><td>0.4</td><td>16.5</td><td>40</td><td>13</td></tr><tr><td>0.6</td><td>15.5</td><td>45</td><td>14</td></tr><tr><td>0.8</td><td>14.5</td><td>48</td><td>15</td></tr><tr><td>1.0</td><td>13.5</td><td>45</td><td>16</td></tr><tr><td>1.2</td><td>12.5</td><td>40</td><td>16.5</td></tr><tr><td>1.4</td><td>11.5</td><td>35</td><td>17</td></tr></tbody></table>				CAPACITY (m <sup>3</sup> /min)	TOTAL HEAD (m)	PUMP EFF. (%)	OUTPUT (kW)	0.0	18.5	0	11	0.2	17.5	25	12	0.4	16.5	40	13	0.6	15.5	45	14	0.8	14.5	48	15	1.0	13.5	45	16	1.2	12.5	40	16.5	1.4	11.5	35	17		
CAPACITY (m <sup>3</sup> /min)	TOTAL HEAD (m)	PUMP EFF. (%)	OUTPUT (kW)																																						
0.0	18.5	0	11																																						
0.2	17.5	25	12																																						
0.4	16.5	40	13																																						
0.6	15.5	45	14																																						
0.8	14.5	48	15																																						
1.0	13.5	45	16																																						
1.2	12.5	40	16.5																																						
1.4	11.5	35	17																																						
TSURUMI MFG. CO., LTD.																																									

DIMENSION DRAWING					No.		No.	A-22182-1
TYPE Submersible Dewatering Pump					MODEL			
					KRS2-A3/B3/C3/D3			
					KRS2-A4/B4/C4/D4			

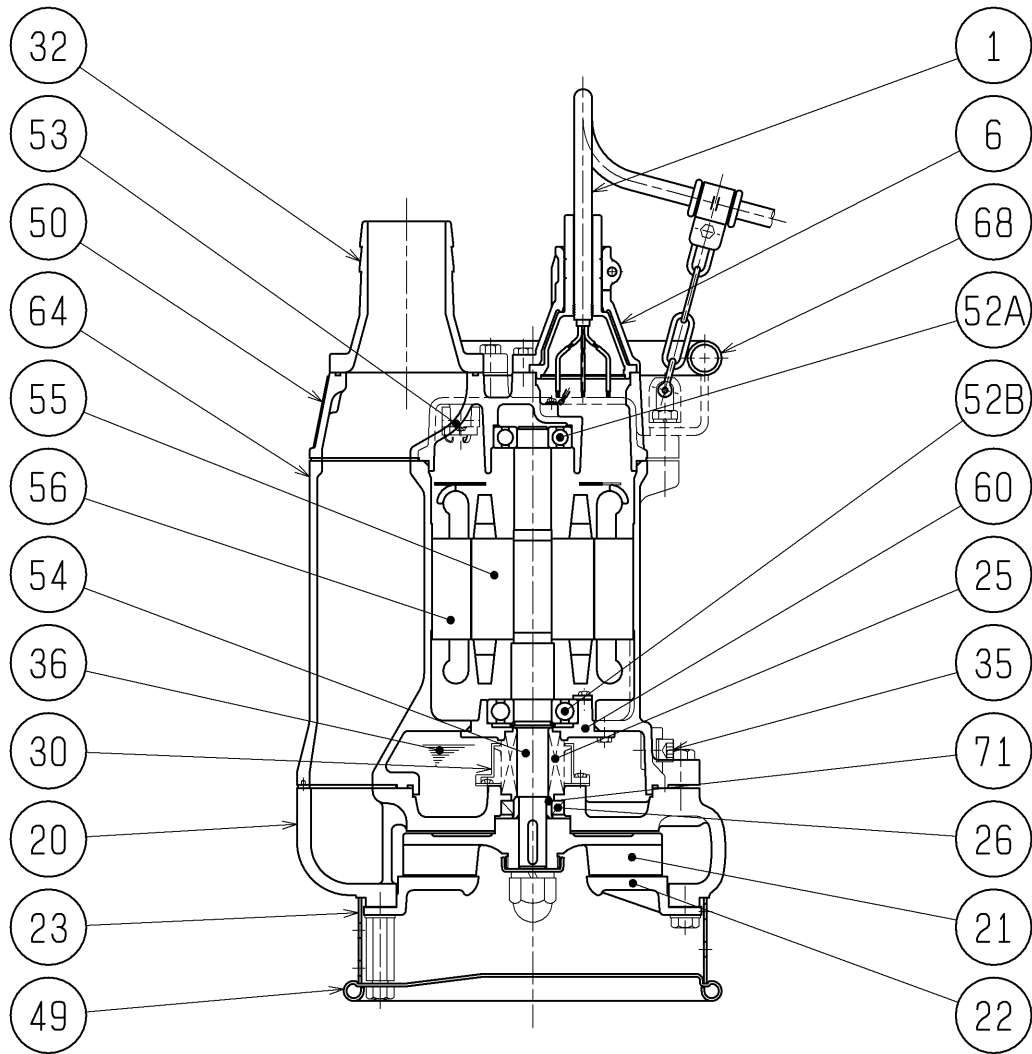
FREQUENCY	MODEL	φd	A	A1	D	B	H	W1	Approximate Weight (※)
50Hz	C3	80	340	253	311	619	599	145	72kg
	C4	100	349	259	320	719	684	155	88kg
	D3	80	362	272	346	704	684	155	91kg
	D4	100	362	272	346	709	674	155	98kg
60Hz	A3	80	340	253	311	619	599	145	72kg
	A4	100	349	259	320	719	684	155	88kg
	B3	80	349	259	320	704	684	155	89kg
	B4	100	349	259	320	709	674	155	95kg

※excluding cable



C. W. L. :Continuous running Water Level

SECTIONAL DRAWING		No.	No.	A-22189-1
TYPE	Submersible Dewatering Pump	MODEL	KRS2-A3/B3/C3/D3 KRS2-A4/B4/C4/D4	



	※1	※2	※3
2. 2kW	H-25	TC305011	6306ZZC3
3. 7kW	H-30	TC355511	6307ZZC3
5. 5kW	H-30	TC355511	6308ZZC3

REQ. SPECIFICATION

No.	DESCRIPTION	Q'TY	MATERIAL / NOTE	No.	DESCRIPTION	Q'TY	MATERIAL / NOTE
1	Cabtyre Cable	1	Chloroprene Sheath	50	Motor Bracket	1	Gray Iron Casting
6	Stuffing Box	1	Gray Iron Casting	52A	Upper Bearing	1	6305ZZC3
20	Pump Casing	1	Gray Iron Casting	52B	Lower Bearing	1	※3
21	Impeller	1	Ductile Iron Casting	53	Motor Protector	1	
22	Suction Cover	1	Gray Iron Casting	54	Shaft	1	Stainless Steel 420J2
23	Strainer	1	Steel Sheet	55	Rotor	1	
25	Mechanical Seal	1	※1	56	Stator	1	
26	Oil Seal	1	※2	60	Bearing Housing	1	Gray Iron Casting
30	Oil Lifter	1	Plastic	64	Motor Frame	1	Gray Iron Casting
32	Hose Coupling	1	Gray Iron Casting	68	Handle	1	Carbon Steel Pipe & Steel Sheet
35	Oil Plug	1	Stainless Steel 304	71	Shaft Sleeve	1	Stainless Steel 403
36	Lubricant		Turbine Oil (ISO VG32)				
49	Bottom Plate	1	Steel Sheet				