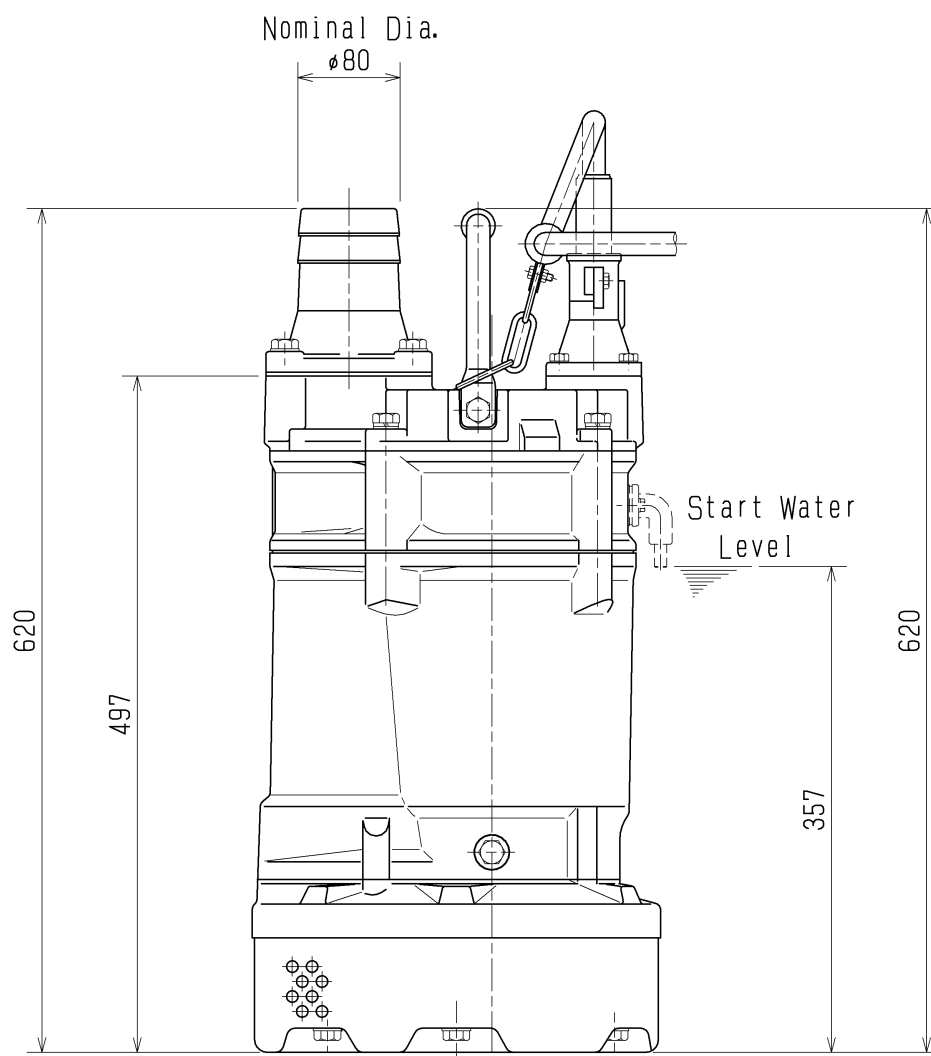
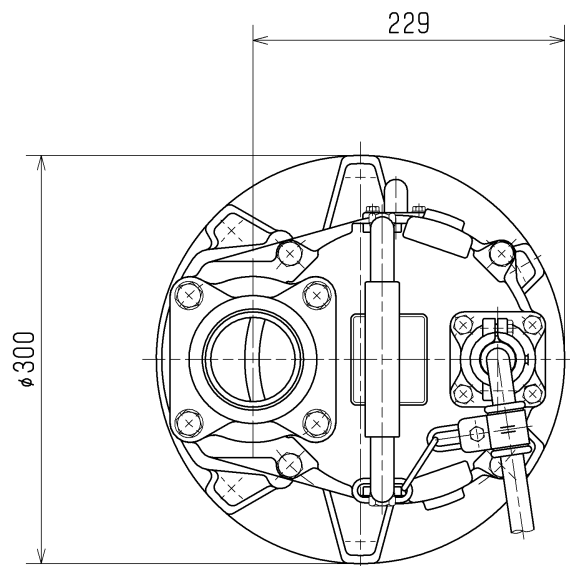


SPECIFICATIONS	Model	KTVE35.5	KTVE-series								
			5.5kW, 3-phase								
<p>Type of Pump Submersible automatic drainage pump for construction and foundation works, floodwater drainage, etc.</p> <p>Type of Fluid Stormwater, groundwater, wash water, and sand-carrying water</p> <p>Temperature: 0 to 40°C</p> <p>Discharge Bore & Connection 80mm, Hose Coupling (100mm discharge bore available on special request)</p> <p>Motor Output 5.5kW</p> <p>Power Supply Three-phase</p> <p>Starting Method Direct on Line</p> <p>Motor Continuous-duty rated, dry-type induction motor</p> <p>Insulation Class: E Degree of Protection: IP68</p> <p>No. of Poles & Speed (Synchronous Speed) 2-pole, 3000/3600min⁻¹ (50/60Hz)</p> <p>Power Supply Voltages & Rated Currents</p> <table><tr><td>50Hz</td><td>60Hz</td></tr><tr><td>380V – 11.6A</td><td>220V – 19.5A</td></tr><tr><td>400V – 11.0A</td><td>380V – 11.7A</td></tr><tr><td>415V – 10.6A</td><td>440V – 10.0A</td></tr></table> <p>Power Cable Sheath: Chloroprene rubber Standard Length: 8m 200 to 600V supply: 1 x 4 x 3.5mm², O.D. 16.8mm</p> <p>Dry Weight (excluding cable) 52kg</p>		50Hz	60Hz	380V – 11.6A	220V – 19.5A	400V – 11.0A	380V – 11.7A	415V – 10.6A	440V – 10.0A	<p>Impeller Vortex impeller deigned for “high-gap structure,” made of ductile cast iron</p> <p>Solids Passage 50Hz – ϕ8.5mm 60Hz – ϕ8.5mm</p> <p>Cable Entry with Anti-Wicking Block Watertight cable entry with strain-relief device. The anti-wicking block prevents water incursion due to capillary action should the power cable be damaged or the end submerged.</p> <p>Bearing Permanently lubricated, deep-groove, double-shielded C3 ball bearings</p> <p>Shaft 403 stainless steel</p> <p>Shaft Seal (Mechanical Seal) Furnished with a double-face mechanical seal located in oil chamber. Both upper and lower seal faces always run in a clean environment.</p> <p>Upper Seal Face: SiC + SiC Lower Seal Face: SiC + SiC</p> <p>OIL LIFTER (Patented) Equipped in oil chamber. It forcibly supplies lubricating oil to the mechanical seal and continues to supply the oil to the upper seal faces even if lubricant falls below the rated volume.</p> <p>Type of Lubricating Oil & Volume Turbine Oil (ISO VG32), 680ml</p> <p>Motor Protection Device A circle thermal protector built in the motor housing. Directly cuts the motor circuit if excessive heat builds up or an overcurrent condition occurs in the motor.</p>	
50Hz	60Hz										
380V – 11.6A	220V – 19.5A										
400V – 11.0A	380V – 11.7A										
415V – 10.6A	440V – 10.0A										
<div>Optional Accessory</div> <p>Extension Electrode</p>											
TSURUMI MANUFACTURING CO., LTD.											

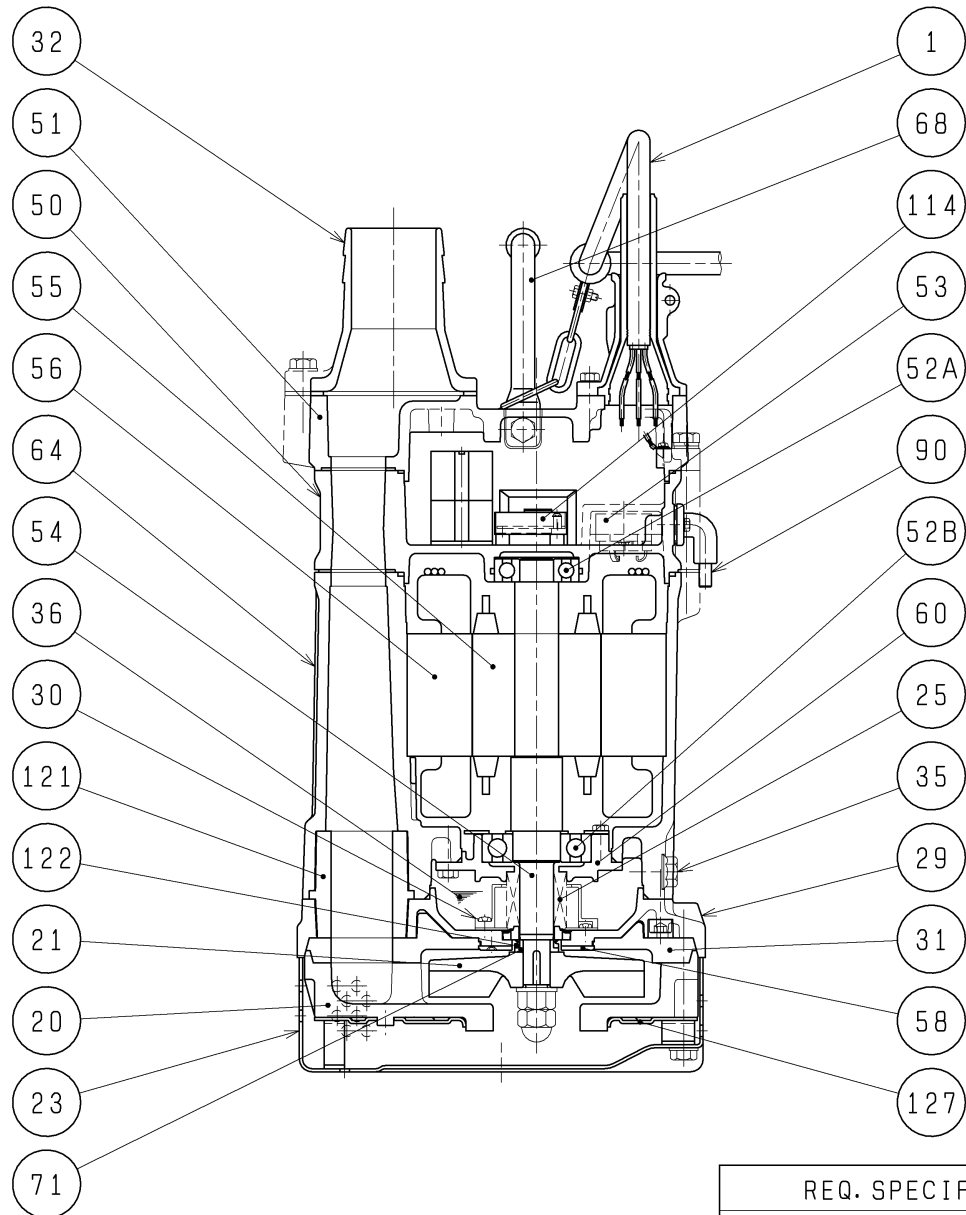
DIMENSION DRAWING		No.		No.	A-15471-1
TYPE	SUBMERSIBLE GENERAL DEWATERING VORTEX PUMP	MODEL	KTVE35.5 -51/61		

Approximate Weight(※)
52kg

※excluding cable



SECTIONAL DRAWING			No.		No.	A-15475-4
TYPE	SUBMERSIBLE GENERAL DEWATERING VORTEX PUMP		MODEL	KTVE35.5 -51/61		



REQ. SPECIFICATION

No.	DESCRIPTION	Q'TY	MATERIAL / NOTE	No.	DESCRIPTION	Q'TY	MATERIAL / NOTE
1	Cabtyre Cable	1	Chloroprene Sheath	53	Motor Protector	1	
20	Pump Casing	1	Butadien Rubber + Natural Rubber	54	Shaft	1	Stainless Steel 403
21	Impeller	1	Ductile Iron Casting	55	Rotor	1	
23	Strainer Stand	1	Steel Sheet	56	Stator	1	
25	Mechanical Seal	1	H-25T	58	Protection Plate	1	Stainless Steel 304
29	Oil Casing	1	Aluminium Die Casting	60	Bearing Housing	1	Aluminium Die Casting
30	Oil Lifter	1	Plastic	64	Motor Frame	1	Aluminium Die Casting
31	Rear Liner	1	Butadien Rubber	68	Handle	1	Carbon Steel Pipe & Rubber
32	Hose Coupling	1	Aluminium Die Casting	71	Shaft Sleeve	1	Stainless Steel 304
35	Oil Plug	1	Stainless Steel 304	90	Level Sensor(Electrode)	1	
36	Lubricant		Turbine Oil(ISO VG32)	114	Relay Unit	1	
50	Motor Bracket	1	Aluminium Alloy Casting	121	Packing	1	Styrene Butadien Rubber
51	Head Cover	1	Aluminium Die Casting	122	V-ring	1	Nitrile Butadien Rubber
52A	Upper Bearing	1	6305ZZC3	127	Fittings	1	Steel Sheet
52B	Lower Bearing	1	6307ZZC3				