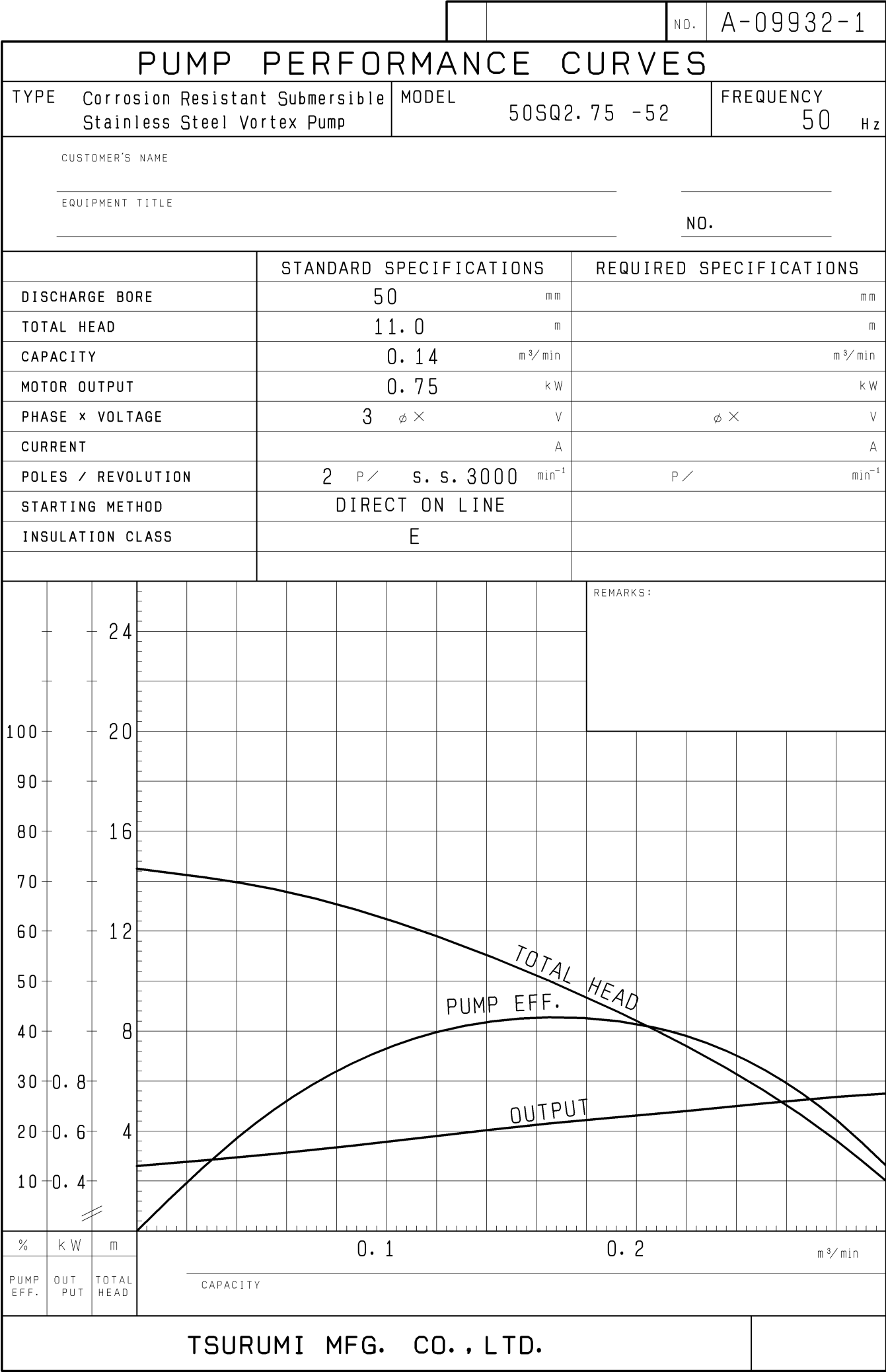


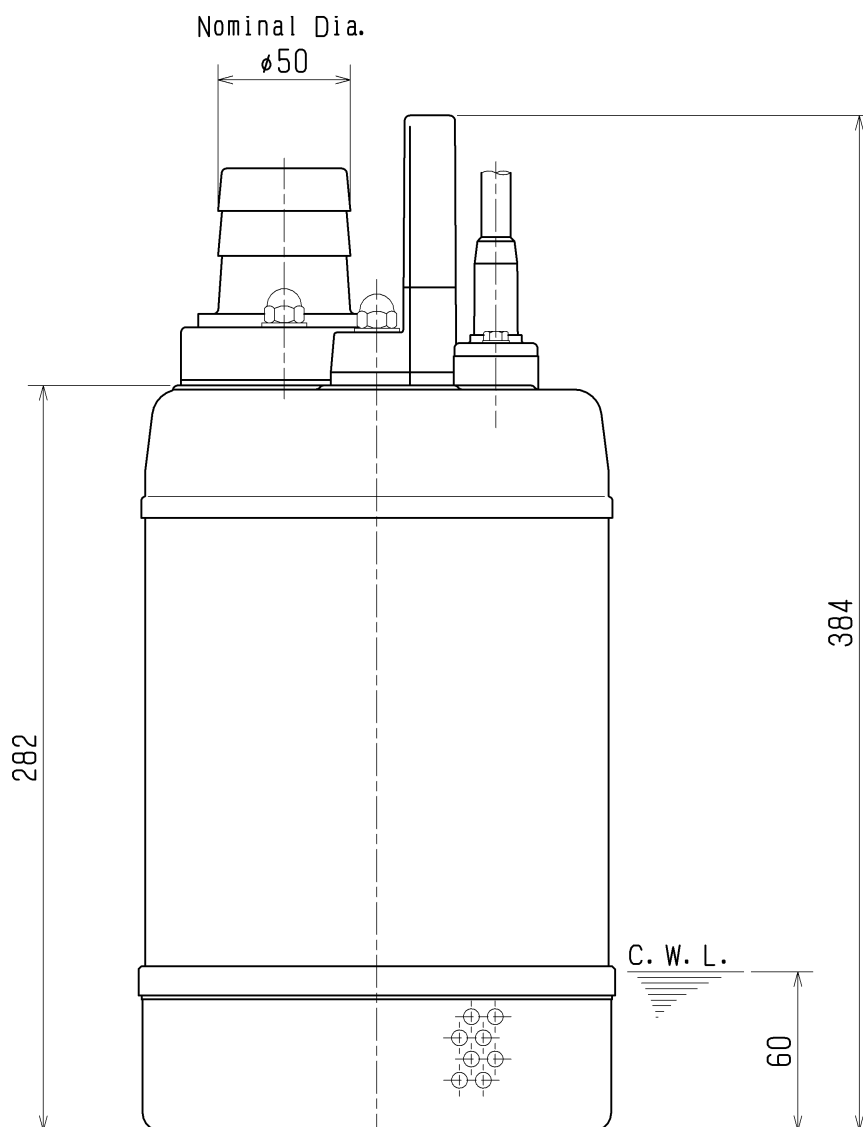
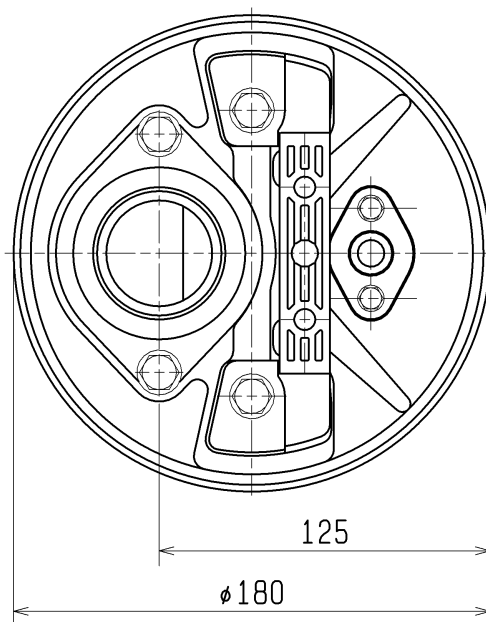
SPECIFICATIONS	Model	50SQ2.75	SQ-series
			0.75kW, 3-phase
Type of Pump Submersible light-weight pump made of cast and fabricated 304 stainless steel suitable for wastewater or clean water		Impeller Vortex impeller designed for “high-gap structure”, made of cast 304 stainless steel, dynamically balanced	
Type of Fluid Wastewater and water with slightly corrosive nature		Solids Passage 50Hz – ϕ6mm 60Hz – ϕ6mm	
Temperature: 0 to 40°C (High temperature model available on special request)		Cable Entry with Anti-Wicking Block Watertight cable entry with strain-relief device. The anti-wicking block prevents water incursion due to capillary action should the power cable be damaged or the end submerged.	
Discharge Bore 50mm		Bearings Permanently lubricated, deep-groove, double-shielded C3 ball bearings	
Motor Output 0.75kW		Shaft 304 stainless steel	
Power Supply Three-phase		Shaft Seal (Mechanical Seal) Furnished with a double-face mechanical seal located in oil chamber. Both upper and lower seal faces always run in a clean environment.	
Starting Method Direct on Line		Upper Seal Faces: Ceramic + Carbon Lower Seal Faces: SiC + Ceramic	
Motor Continuous-duty rated, dry-type induction motor		OIL LIFTER (Patented) Equipped in oil chamber. It forcibly supplies lubricating oil to the mechanical seal and continues to supply the oil to the upper seal faces even if lubricant falls below the rated volume.	
Insulation Class: E (available in F on special request) Degree of Protection: IP68		Type of Lubricating Oil & Volume Liquid Paraffin (ISO VG32), 230ml	
No. of Poles & Speed (Synchronous Speed) 2-pole, 3000/3600min ⁻¹ (50/60Hz)		Motor Protection Device A circle thermal protector built in the motor housing. Directly cuts the motor circuit if excessive heat builds up or an overcurrent condition occurs in the motor.	
Power Supply Voltages & Rated Currents 50Hz 60Hz 380V – 1.8A 220V – 3.4A 400V – 1.8A 380V – 1.9A 415V – 1.8A 440V – 1.7A			
Power Cable Sheath: PVC Standard Length: 6m 200 to 600V supply: 1 × 4 × 1.25mm ² , O.D. 11.1mm			
Dry Weight (excluding cable) 14kg			
TSURUMI MANUFACTURING CO., LTD.			



DIMENSION DRAWING			No.	No.	A-09938-1
TYPE	Corrosion Resistant Submersible Stainless Steel Vortex Pump		MODEL	50SQ2.75 -52/62	

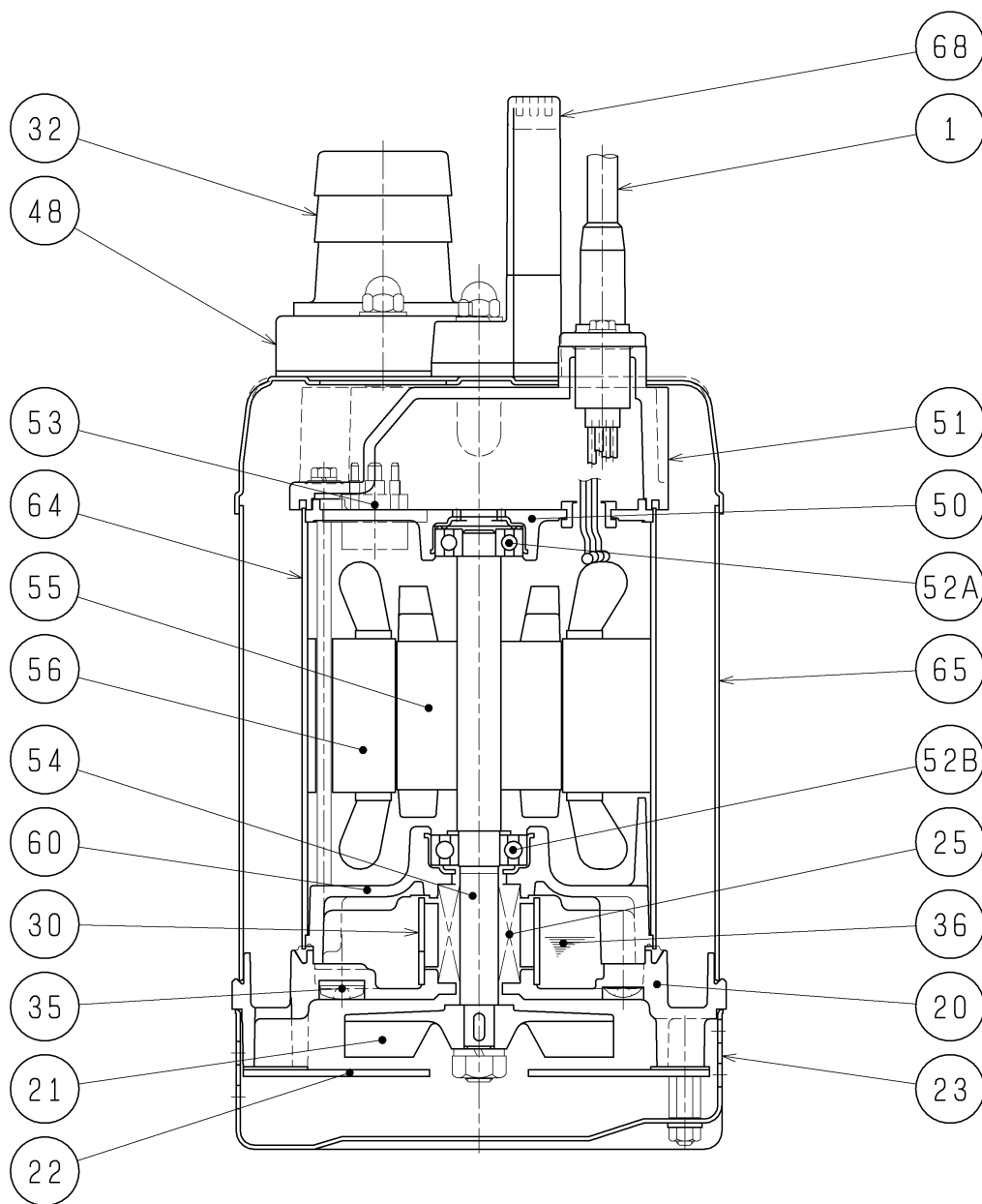
Approximate Weight (※)
14kg

※excluding cable



C. W. L. : Continuous running Water Level

SECTIONAL DRAWING		No.	No.	A-09942-3
TYPE	Corrosion Resistant Submersible Stainless Steel Pump	MODEL	50SQ2.75 -52/62	



REQ. SPECIFICATION

※ the wetted part

No.	DESCRIPTION	Q'TY	MATERIAL / NOTE	No.	DESCRIPTION	Q'TY	MATERIAL / NOTE
1	Cabtyre Cable	1	PVC Sheath	52A	Upper Bearing	1	6201ZZC3
20	Pump Casing	1	Stainless Steel Casting	52B	Lower Bearing	1	6302ZZC3
21	Impeller	1	Stainless Steel Casting	53	Motor Protector	1	
22	Suction Cover	1	Stainless Steel 304	54	Shaft	1	Stainless Steel 304(※)
23	Strainer Stand	1	Stainless Steel 304	55	Rotor	1	
25	Mechanical Seal	1	W-14HC	56	Stator	1	
30	Oil Lifter	1	Plastic	60	Bearing Housing	1	Aluminium Die Casting
32	Hose Coupling	1	Plastic	64	Motor Frame	1	Stainless Steel 304
35	Oil Plug	1	Stainless Steel 304	65	Outer Cover	1	Stainless Steel 304
36	Lubricant		Liquid Paraffin (ISO VG32)	68	Handle	1	Plastic
48	Screwed Flange	1	Plastic W/GF				
50	Motor Bracket	1	Aluminium Die Casting				
51	Head Cover	1	Stainless Steel Casting				