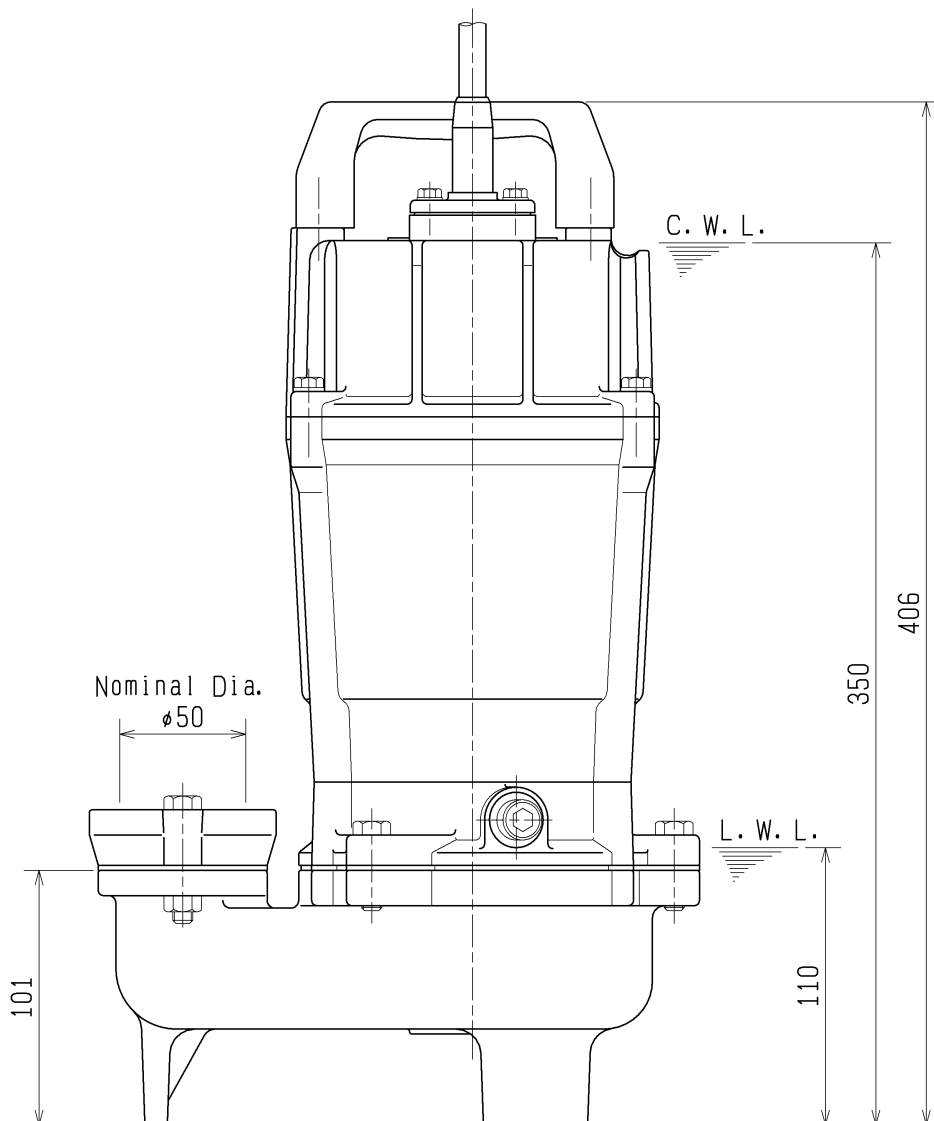
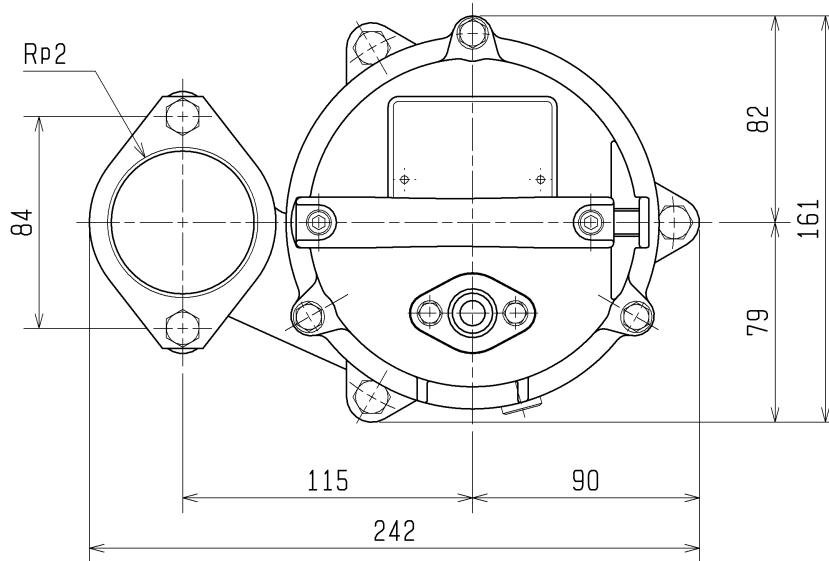


SPECIFICATIONS	Model	50UT2.75S	UT-series
			0.75kW, 1-phase
Type of Pump Submersible cast iron vortex pump suitable for pumping sewage and wastewater		Impeller Vortex impeller made of glass-fiber reinforced PPO	
Type of Fluid Sewage, wastewater, and water carrying solid matters		Solids Passage 50Hz – ϕ35mm 60Hz – ϕ35mm	
Temperature: 0 to 40°C		Cable Entry with Anti-Wicking Block Watertight cable entry with strain-relief device. The anti-wicking block prevents water incursion due to capillary action should the power cable be damaged or the end submerged.	
Discharge Bore 50mm		Bearings Permanently lubricated, deep-groove, double-shielded C3 ball bearings	
Motor Output 0.75kW		Shaft 403 stainless steel	
Power Supply Single-phase		Shaft Seal (Mechanical Seal) Furnished with a double-face mechanical seal located in oil chamber. Both upper and lower seal faces always run in a clean environment.	
Starting Method Capacitor Run		Upper Seal Faces: Ceramic + Carbon Lower Seal Faces: Ceramic + Carbon	
Motor Continuous-duty rated, dry-type induction motor		OIL LIFTER (Patented) Equipped in oil chamber. It forcibly supplies lubricating oil to the mechanical seal and continues to supply the oil to the upper seal faces even if lubricant falls below the rated volume.	
Insulation Class: E Degree of Protection: IP68		Type of Lubricating Oil & Volume Turbine Oil (ISO VG32), 160ml	
No. of Poles & Speed (Synchronous Speed) 2-pole, 3000/3600min ⁻¹ (50/60Hz)		Motor Protection Device A circle thermal protector built in the motor housing. Directly cuts the motor circuit if excessive heat builds up or an overcurrent condition occurs in the motor.	
Power Supply Voltages & Rated Currents 50Hz 60Hz 220V – 5.3A 110V – 11.6A 230V – 5.3A 220V – 5.8A 240V – 4.5A			
Power Cable Sheath: PVC Standard Length: 5m 100 to 240V supply: 1 × 3 × 1.25mm ² , O.D. 10.1mm			
Dry Weight (excluding cable) 16.5kg			
Optional Accessories			
TOK Set (Guide Rail Fitting Type) • Duckfoot Bend • Guide Support • Guide Hook • Lifting Chain 4m (with Shackles)			
TSURUMI MANUFACTURING CO., LTD.			

				NO.		A-20682-1																	
PUMP PERFORMANCE CURVES																							
TYPE Sewage Submersible Vortex Pump				MODEL 50UT2.75S -52		FREQUENCY 50 Hz																	
CUSTOMER'S NAME																							
EQUIPMENT TITLE																							
NO.																							
		STANDARD SPECIFICATIONS			REQUIRED SPECIFICATIONS																		
DISCHARGE BORE		50 mm			mm																		
TOTAL HEAD		MAX. 12.5 m			m																		
CAPACITY		MAX. 0.44 m ³ /min			m ³ /min																		
MOTOR OUTPUT		0.75 kW			kW																		
PHASE × VOLTAGE		1 φ × V			φ × V																		
CURRENT		A			A																		
POLES / REVOLUTION		2 P / S. S. 3000 min ⁻¹			P / min ⁻¹																		
STARTING METHOD		CAPACITOR MOTOR																					
INSULATION CLASS		E																					
					REMARKS:																		
<table><tr><td>%</td><td>kW</td><td>m</td><td colspan="3">CAPACITY</td></tr><tr><td>PUMP EFF.</td><td>MOTOR OUTPUT</td><td>TOTAL HEAD</td><td>0.1</td><td>0.2</td><td>0.3</td><td>0.4</td><td>0.5</td><td>0.6</td><td>m³/min</td></tr></table>					%	kW	m	CAPACITY			PUMP EFF.	MOTOR OUTPUT	TOTAL HEAD	0.1	0.2	0.3	0.4	0.5	0.6	m ³ /min			
%	kW	m	CAPACITY																				
PUMP EFF.	MOTOR OUTPUT	TOTAL HEAD	0.1	0.2	0.3	0.4	0.5	0.6	m ³ /min														
TSURUMI MFG. CO., LTD.																							

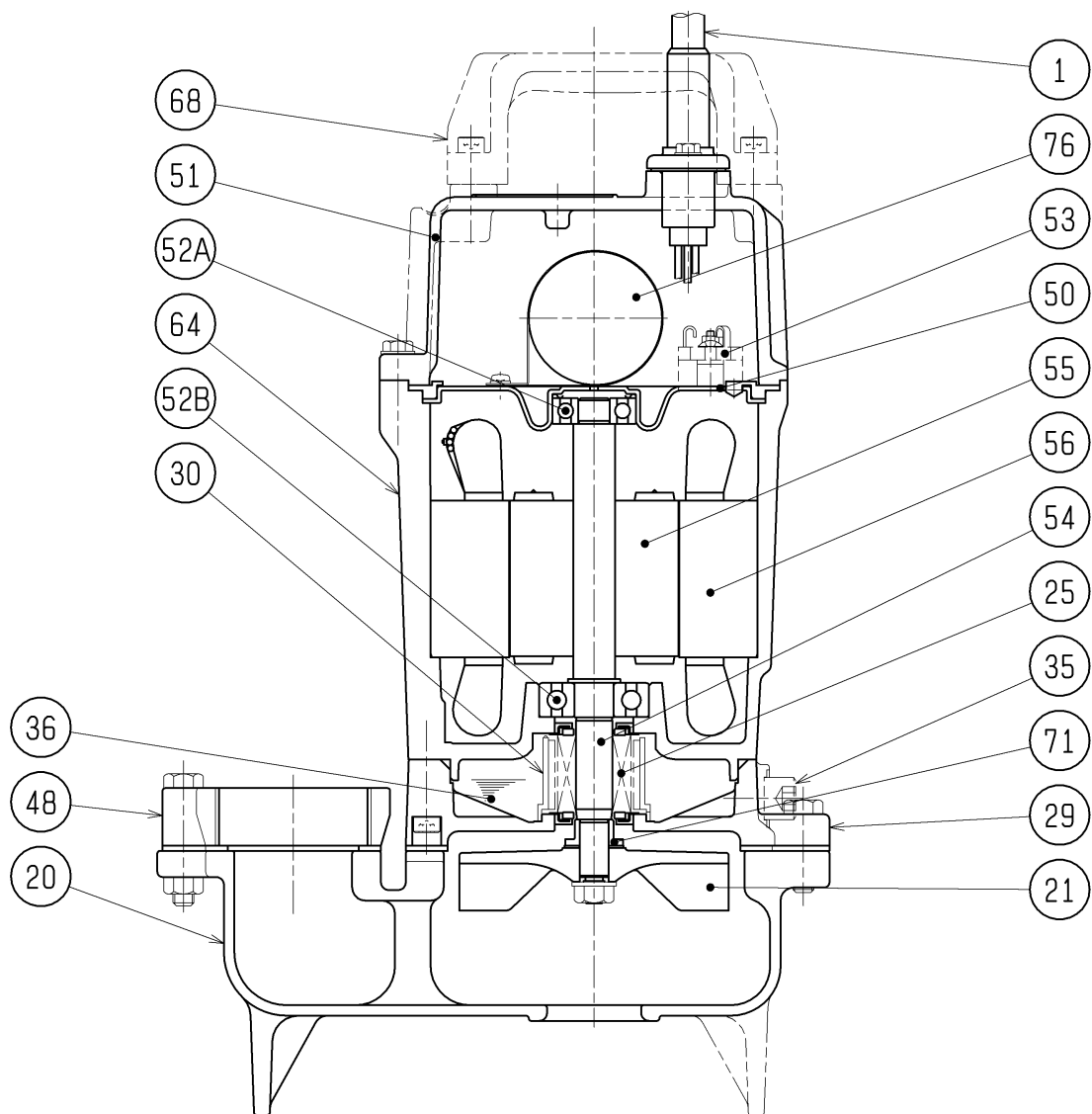
DIMENSION DRAWING		No.		No.	A-20692-1
TYPE	Sewage Submersible Vortex Pump	MODEL	50UT2.75S -52/62		

Approximate Weight (※)
16.5kg



C.W.L. :Continuous running Water Level
L.W.L. :Lowest running Water Level

SECTIONAL DRAWING		No.	No.	A-20701-2
TYPE	Submersible Vortex Sewage Pump	MODEL	50UT2.75S -52/62	



REQ. SPECIFICATION

No.	DESCRIPTION	Q'TY	MATERIAL / NOTE	No.	DESCRIPTION	Q'TY	MATERIAL / NOTE
1	Cabtyre Cable	1	PVC Sheath	52A	Upper Bearing	1	6201ZZC3
20	Pump Casing	1	Gray Iron Casting	52B	Lower Bearing	1	6302ZZC3
21	Impeller	1	Plastic W/GF	53	Motor Protector	1	
25	Mechanical Seal	1	W-14VCA	54	Shaft	1	Stainless Steel 403
29	Oil Casing	1	Gray Iron Casting	55	Rotor	1	
30	Oil Lifter	1	Plastic	56	Stator	1	
35	Oil Plug	1	Stainless Steel 304	64	Motor Frame	1	Gray Iron Casting
36	Lubricant		Turbine Oil (ISO VG32)	68	Handle	1	Plastic
48	Screwed Flange	1	Gray Iron Casting	71	Shaft Sleeve	1	Stainless Steel 304
50	Motor Bracket	1	Steel Sheet	76	Capacitor	1	
51	Head Cover	1	Gray Iron Casting				